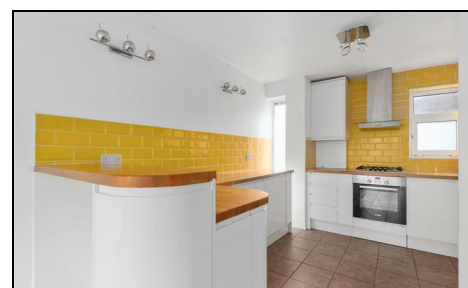
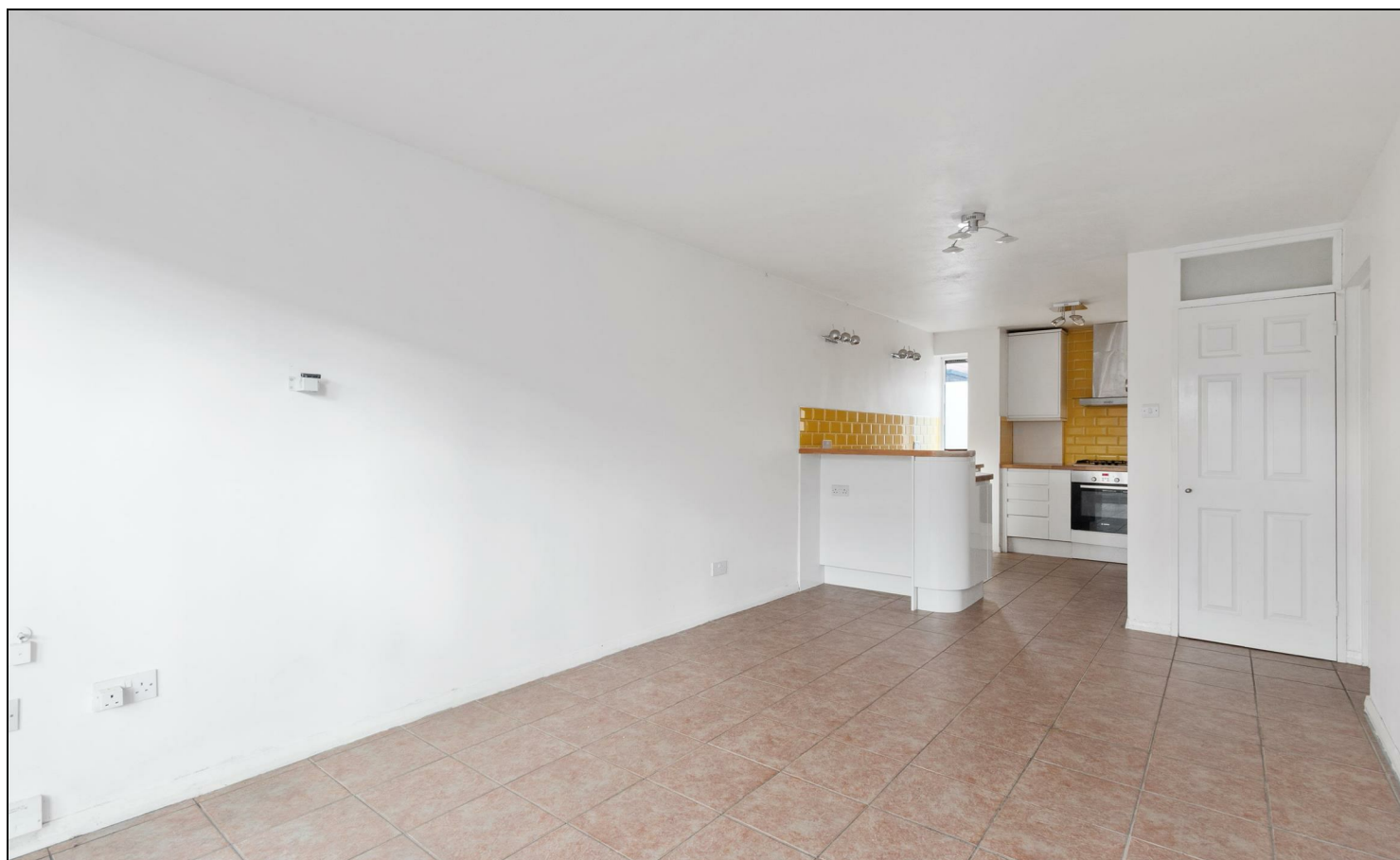


Grayswood Gardens Raynes Park, SW20 0UF

£275,000 Leasehold

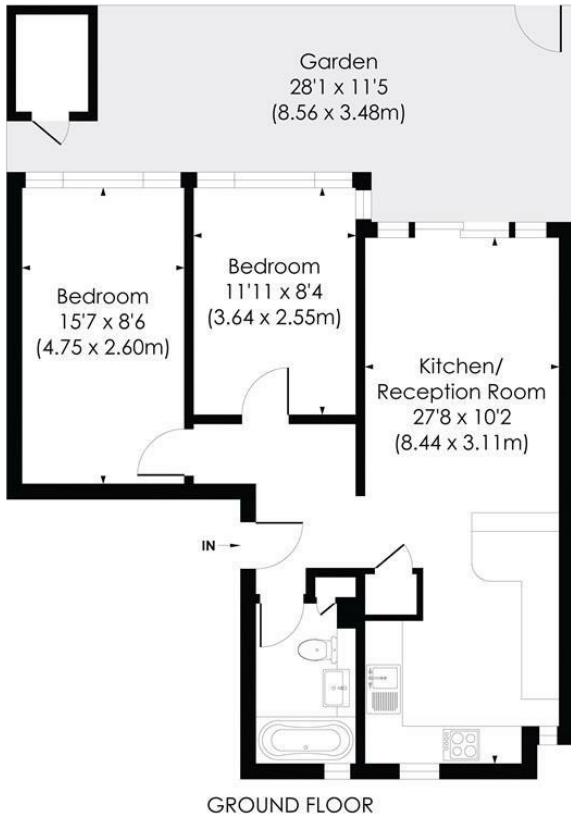


This spacious and well presented 640 sqft TWO DOUBLE BEDROOM, first floor apartment has a private rear garden and is ideally located for Raynes Park Station (0.4 miles) and High Street (0.3 miles). An excellent first/second time purchase or buy to let investment. There is a spacious open plan kitchen/dining/reception room, a neutrally decorated bathroom, two large storage cupboards and two good sized double bedrooms. There is also gas central heating, double glazing and residents parking. No Onward Chain.

GRAYSWOOD GARDENS, SW20

Approx. Gross Internal Floor Area

640 Sq. ft/59.43 Sq. m



© Pixangle Property Marketing Ltd. info@pixangle.com Tel: 0208 870 2118



This floor plan has been prepared for the purpose of illustration only in accordance with the latest RICS code of measuring practice and is not to scale. All measurements and areas are approximate and whilst every effort has been made to ensure the accuracy of the plan contained here, no responsibility is taken for any error, omission or misstatement.

- Two Double Bedroom
- Ground Floor Apartment
- Private Garden
- Open Plan Kitchen/Dining/Family Room
- Close to Raynes Park Station and High Street
- No Onward Chain
- Lease - 89 years
- Residents Parking
- EPC - C
- Council Tax Band - C



Energy Efficiency Rating		Current	Potential
<small>Very energy efficient - lower running costs</small>			
A	(91-100)		
B	(81-90)		
C	(69-80)	69	74
D	(55-68)		
E	(39-54)		
F	(21-38)		
G	(1-20)		
<small>Not energy efficient - higher running costs</small>			
England & Wales		EU Directive 2002/91/EC	

For Free Mortgage Quote and Best Mortgage Rates, call Ellisons Mortgage Advisor on 0208 944 9595



Although these particulars are believed to be correct, their accuracy is not guaranteed and they do not form part of any contract.

Celebrating 30 years of successful Sales and Lettings in Merton

